



BROOK GAMBLE



22 Royal Sussex Crescent , Eastbourne, BN20 8PB

Brook Gamble offer to the market this chain free, 3 bedroom, 2 reception room semi-detached house in the popular Old Town area of Eastbourne. The property enjoys the benefits a 2 bathrooms, gas central heating and uPVC double glazing. The house is located close to popular local schools and shops as well as access to The South Downs. Sole Agents.

£279,950

22 Royal Sussex Crescent

, Eastbourne, BN20 8PB



- Sought After Old Town Location
- Large Accommodation
- Ground Floor Shower Room
- First Floor Bathroom
- Cloakroom
- Gas Central Heating
- UPVC Double Glazing
- Good Sized Rear Garden
- Chain Free
- Sole Agents

Entrance Porch

Entrance Hall

Lounge

13'3 x 11'7 (4.04m x 3.53m)

Dining Room

12' x 11'10 (3.66m x 3.61m)

Kitchen

11'3 x 8'3 (3.43m x 2.51m)

Shower Room

Cloakroom

First Floor Landing

Bedroom 1

13'6 x 11'9 (4.11m x 3.58m)

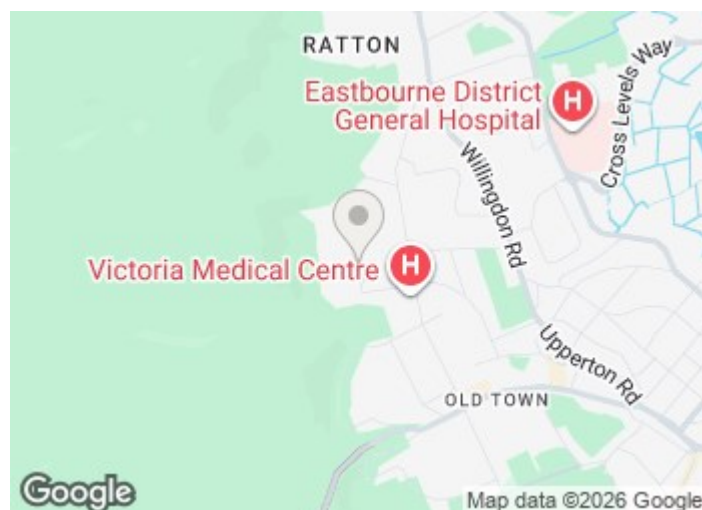
Bedroom 2

12' x 11'11 (3.66m x 3.63m)

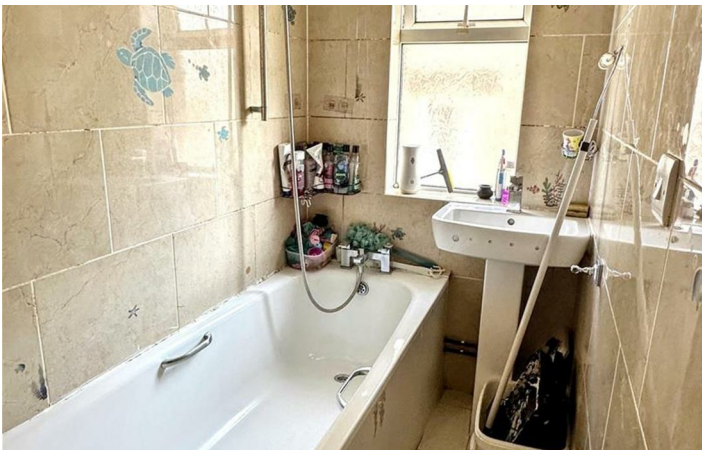
Bedroom 3

11'4 x 7'10 (3.45m x 2.39m)

Bathroom

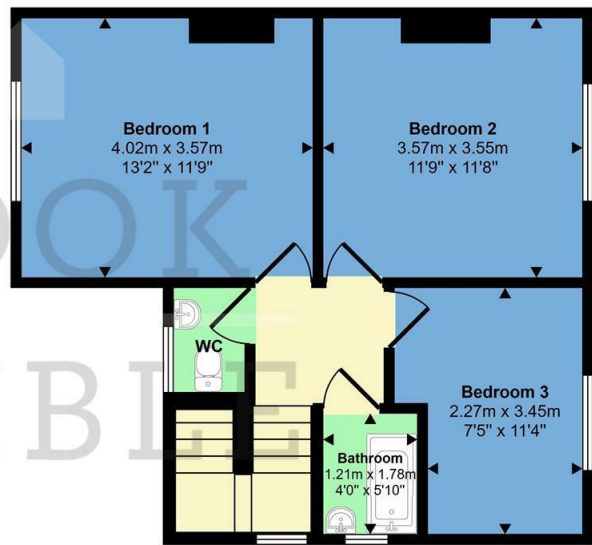
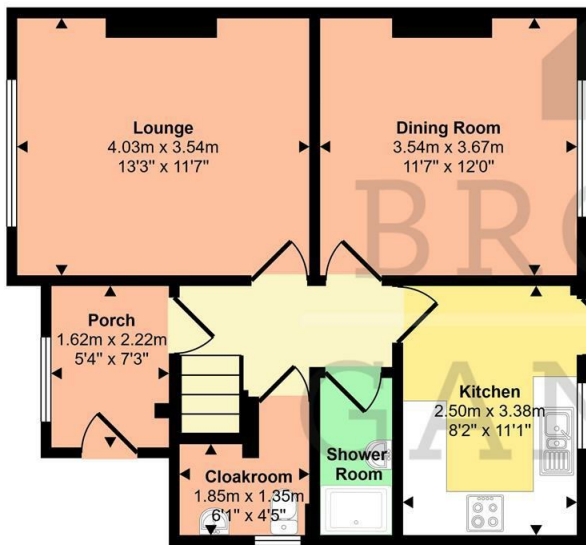


Directions



Floor Plan

Approx Gross Internal Area
100 sq m / 1081 sq ft



This floorplan is only for illustrative purposes and is not to scale. Measurements of rooms, doors, windows, and any items are approximate and no responsibility is taken for any error, omission or mis-statement. Icons of items such as bathroom suites are representations only and may not look like the real items. Made with Made Snappy 360.

These particulars, whilst believed to be accurate are set out as a general outline only for guidance and do not constitute any part of an offer or contract. Intending purchasers should not rely on them as statements of representation of fact, but must satisfy themselves by inspection or otherwise as to their accuracy. No person in this firm's employment has the authority to make or give any representation or warranty in respect of the property.

